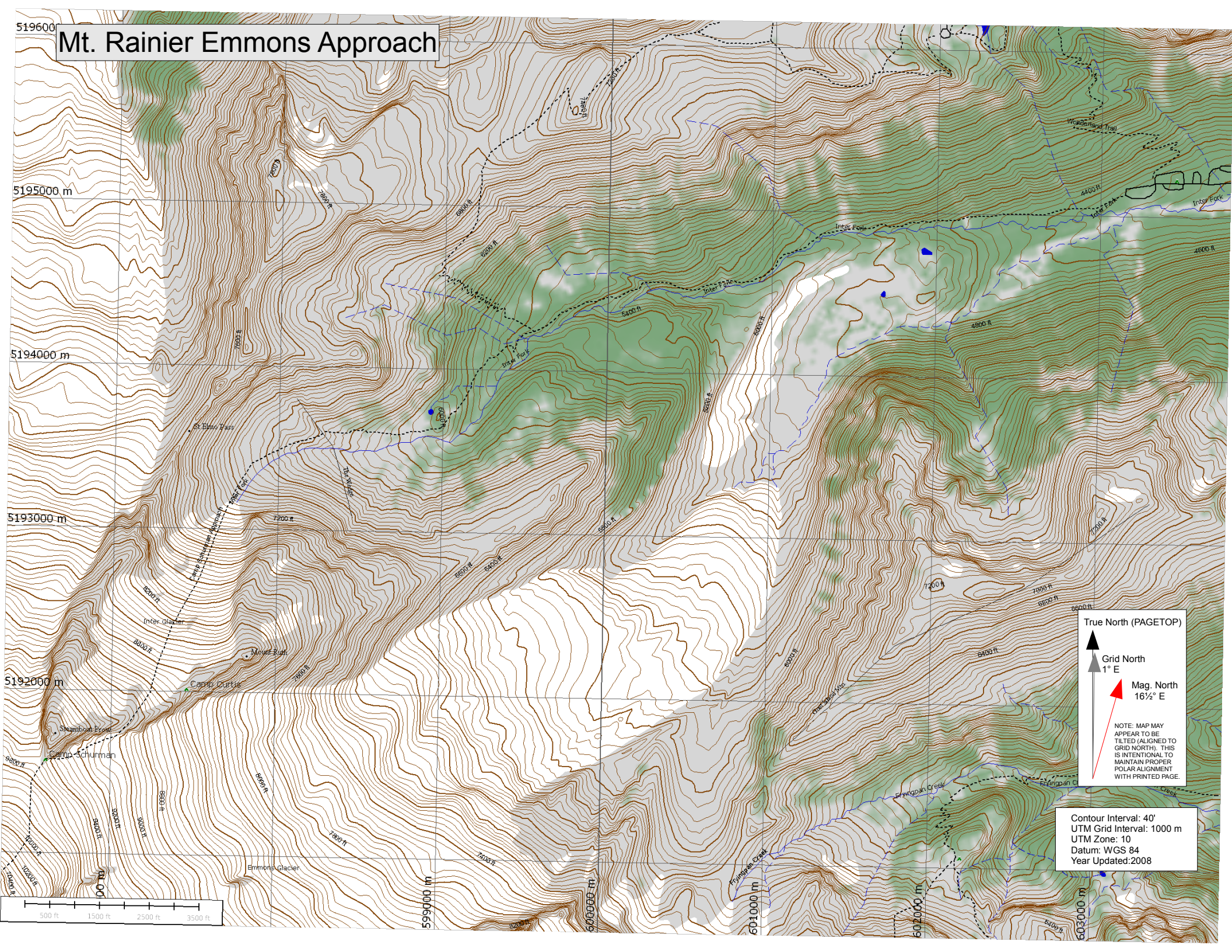


Mt. Rainier Emmons Approach



519600
519500 m
519400 m
519300 m
519200 m
599000 m
600000 m
601000 m
602000 m
603000 m

True North (PAGETOP)
Grid North
1° E
Mag. North
16½° E

NOTE: MAP MAY APPEAR TO BE TILTED (ALIGNED TO GRID NORTH). THIS IS INTENTIONAL TO MAINTAIN PROPER POLAR ALIGNMENT WITH PRINTED PAGE.

Contour Interval: 40'
UTM Grid Interval: 1000 m
UTM Zone: 10
Datum: WGS 84
Year Updated: 2008

500 ft 1500 ft 2500 ft 3500