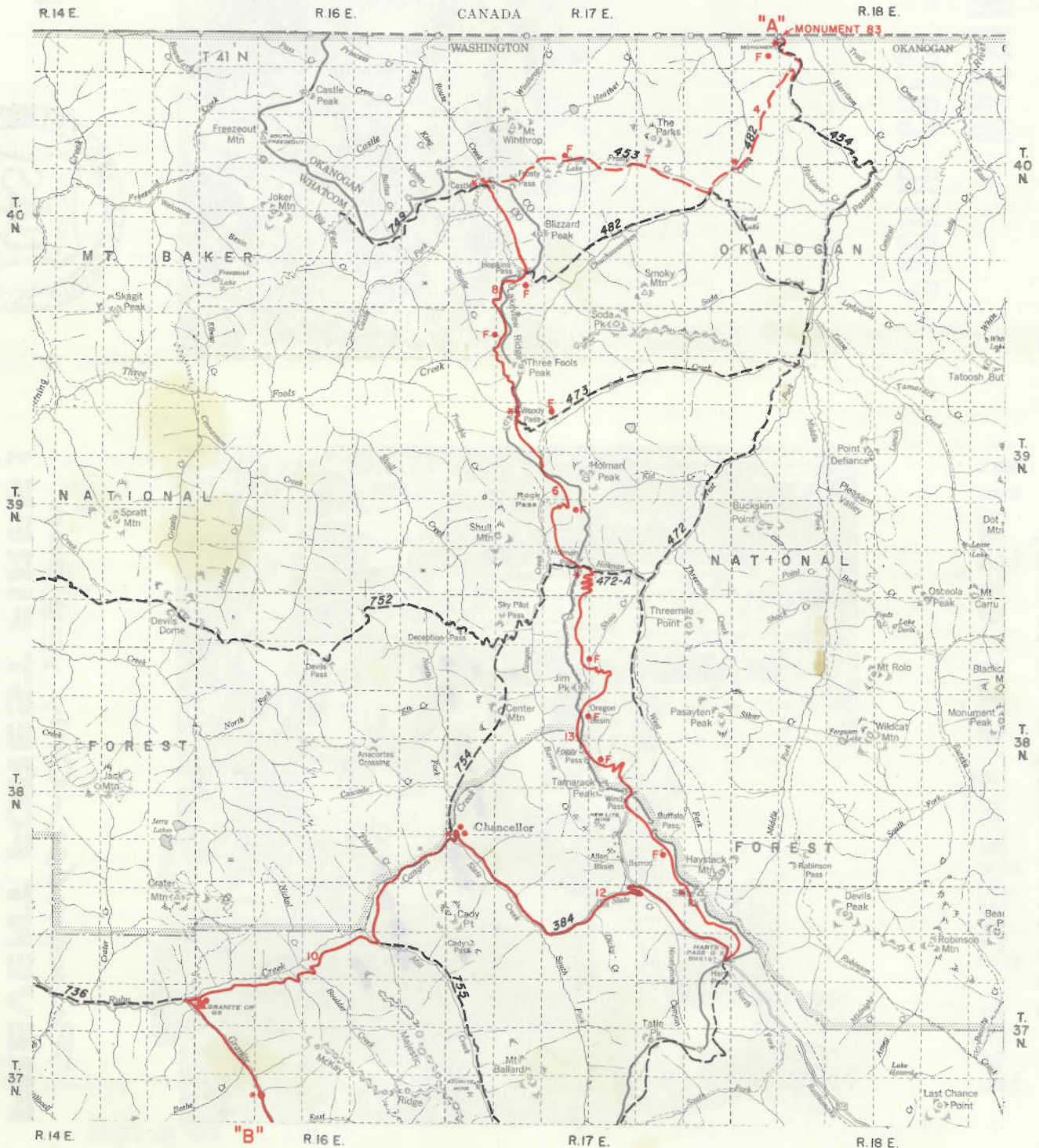


CASCADE CREST TRAIL

PACIFIC CREST TRAIL SYSTEM

LEGEND

- | | |
|--|---------------------------|
| — NATIONAL FOREST BOUNDARY | ⬮ TRAIL SHELTER |
| — ROAD, DIRT OR BETTER | ● CAMPSITE |
| === ROAD, PRIMITIVE | ▲ CAMPGROUND |
| - - - TRAIL | F HORSE FEED |
| — CASCADE CREST TRAIL (2000) | ⚡ DISTRICT RANGER STATION |
| <u>123</u> ALTERNATE ROUTE | ⚡ GUARD STATION |
| * 2 * MILEAGE BETWEEN ASTERISKS | ⚡ LOOKOUT STATION |
| <u>123</u> CONNECTING ROAD AND NUMBER | ✈ AIRSTRIP |
| <u>123</u> CONNECTING TRAIL AND NUMBER | |



Trail from E. C. Manning Provincial Park, Canada, to



- | | | | |
|-----|--|----|-----|
| 0 | MONUMENT #83, Canadian border, POINT "A" Elevation 6500'.
ALTERNATE ROUTE on #482, CHUCHUWANTEEN TRAIL (south).
1/2 mi. Monument #83 Spring. Campsite, horse feed.
1/2 mi. Jct. #454 Harrison Creek Trail (south).
3 mi. to: | 0 | 457 |
| 4 | CHUCHUWANTEEN RIVER (ford).
1 mi. Frosty Creek (ford), Jct. #453 Frosty Creek Trail (west).
Along #453 Frosty Creek Trail (west).
1/2 mi. Frosty Creek Crossing.
3 mi. Frosty Lake, campsite, horse feed.
2 mi. Frosty Pass.
1 mi. to: | 4 | 453 |
| 12 | CASTLE PASS. End of Alternate Route. Jct. Cascade Crest Trail (south); Jct. #749 Castle Pass Trail (west).
3 1/2 mi. Hopkins Pass. Jct. #482 Chuchuwanteen Trail (east). Campsite, horse feed.
3 mi. Mountain Home Basin. Campsite, horse feed.
2 mi. to: | 8 | 445 |
| 20 | WOODY PASS. Jct. #473 Rock Creek Trail (east), campsite and horse feed at Coney Basin, 1 mi. east.
Telephone at airstrip on Pasayten River, 8 mi. Airport closed to public use under wilderness regulations.
1 mi. Rock Creek Pass. Proceed with caution.
2 mi. Goat Lake Basin. Campsite, horse feed.
2-1/2 mi. to: | 8 | 437 |
| 26 | HOLMAN PASS. Jct. #472-A Holman Creek Trail (east), approximately 2 mi. east to Jct. #472 West Fork Pasayten Trail; also Jct. #752 Devil Ridge Trail (west).
4 1/2 mi. Shaw Creek. Campsite, horse feed.
3 mi. Oregon Basin. Campsite, horse feed.
1 1/2 mi. Windy Basin. Campsite, horse feed.
1/2 mi. Windy Pass.
2 mi. Benson Basin. Campsite, horse feed.
1-1/2 mi. to: | 6 | 431 |
| 39 | SLATE PEAK. Follow Harts Pass Road, south.
2 mi. Harts Pass. Telephone. Turn north, continue to follow Harts Pass road #384 for
10 mi. to: | 13 | 418 |
| 51 | CHANCELLOR. Improved Forest Camp. Jct. #754 Center Mountain Trail (north - This could be alternate route to Holman Pass). Follow Canyon Creek:
3 mi. Mill Creek Jct. #755 Mill Creek Trail (east and south).
2 mi. Boulder Creek Crossing. Spring run-offs may make trail impassable.
3 mi. along Ruby Creek to Granite Creek Guard Station. Campsite. Jct. #736 Ruby Creek Trail (west). Ross Dam is 8 miles west, Diablo is 14 miles.
2 mi. up Granite Creek to: | 12 | 406 |
| 61 | BEEBE CREEK POINT "B"
Follow Granite Creek, south
2 mi. Jct. #756 East Creek Trail (east). Campsite, fishing.
7 mi. Jct. #740 Fisher Creek Trail (west). Campsite, fishing.
6 mi. to: | 10 | 396 |
| 76 | RAINY PASS. Campsite, horse feed.
1/2 mi. Jct. #1274 Lake Ann Trail (west). Campsite at Lake Ann, 1 mi. west.
1 mi. Jct. #1278 Rainy Lake Trail (west). Campsite, horse feed.
1 mi. Jct. #1275 Washington Pass Trail (east). This is an alternate route to Early Winters drainage and Methow.
1/2 mi. Jct. #1276 Copper Pass Trail (east).
1 mi. Jct. #1232 Stilletto Peak Trail (east). Crocker Cabin, water campsite, horse feed.
1 mi. to: | 15 | 381 |
| 81 | JCT. #1277 TWISP PASS TRAIL (east). Campsite.
1 mi. Hid-a-way Camp. Limited horse feed, fishing.
2 mi. State Camp. Jct. #1236 Rainbow Lake Trail (south). Rainbow Lake 6 mi. to south. Campsites, fishing, limited horse feed.
2 mi. Maple Creek Ford. Campsite.
1 1/2 mi. North Fork Bridge. (Cross Bridge Creek). Two Campsites, no horse feed.
2-1/2 mi. to: | 5 | 376 |
| 90 | BRIDGE CREEK CAMP. Improved. Jct. #3308 Stehekin River Rd. (west). Follow this road south.
1 mi. Shady Forest Camp. Improved, no horse feed.
3 mi. Tumwater Forest Camp. Improved, no horse feed.
1 mi. to: | 9 | 367 |
| 95 | HIGH BRIDGE GUARD STATION. Telephone. Improved Forest Camp with shelter, no horse feed. Stehekin Road turns east, 11 mi. to Stehekin Landing on Lake Chelan. Leave road, go west through Agnes Gorge.
1 mi. enter Glacier Peak Wilderness Area.
4 mi. to: | 5 | 362 |
| 100 | FIVE MILE CAMP. Jct. #1272 West Fork Agnes Creek Trail (west). Go up South Fork Agnes Creek.
3 mi. Swamp Creek Ford. Good camp, no horse feed.
4 mi. Hemlock Campsite, no horse feed.
2 mi. to: POINT "C" | 5 | 357 |